



GRADUATE PROGRAMS



GRADUATE PROGRAMS





Rector: Mauro Luciano Baesso



Vice Rector: Julio César Damasceno

MANAGEMENT 2014 - 2018

Introduction

UEM has an expressive scientific production, and this enabled the university to be classified as the 13rd Brazilian institution in the Science Citation Index (SCI) and in the Institute for Scientific Information (SI).

Another indication of the quality in the science production is the existence of nationally renowned research groups, taking into consideration the acceptance of projects in institutions such as National Program of Support for Centers of Excellence – Pronex. In the areas of Ecology and Environment, Agronomy, Zoo Technology, Biochemistry and Functional Genomic, there is the acceptance from the Long-term Ecological Research Network in Brazil (Peld). In the areas of Ecology and Environment, acceptance happens in the Program of Biotechnology and Genetic Resources by the Ministry of Science and Technology, and in the Genome Project in Paraná state (Genopar), besides the participation of the groups in the Millennium Institute (Genetics).

The graduate courses hold the greatest part of the research areas. The institution offers about 51 Specialization courses, 44 Masters` Degree Courses and 25 PhD courses, all of them evaluated and approved by Capes (Brazil`s Coordination for the Improvement of Higher Level of Education Personnel) and by the Ministry of Science, Technology and Innovation. Also the institution has 984 research projects in course and 402 research groups enrolled.

Summary

AGRICULTURAL SCIENCES

Graduate Program in Agronomy.....	6
Graduate Program in Food Science.....	7
Graduate Program in Agricultural Sciences.....	8
Graduate Program in Genetics and Breeding.....	9
Graduate Program in Sustainable Production and Animal Health.....	10
Graduate Program in Animal Sciences.....	11

BIOLOGICAL SCIENCES

Graduate Program in Comparative Biology.....	12
Graduate Program in Environmental Biotechnology.....	13
Graduate Program in Biological Sciences.....	14
Graduate Program in Ecology of Continental Water Environments	15
Program Graduate in Physiological Sciences.....	16

EXACT SCIENCES AND EARTH SCIENCE

Graduate Program in Biostatistics.....	17
Graduate Program in Computer Science.....	18
Graduate Program in Education for Science and Mathematics	19
Graduate Program in Physics.....	20
Graduate Program in Geography.....	21
Graduate Program in Mathematics.....	22
Graduate Program in Chemistry.....	23

ENGINEERING

Graduate Program in Civil Engineering	24
Graduate Program in Mechanical Engineering	25
Graduate Program in Chemical Engineering	26
Graduate Program in Urban Engineering	27

HEALTH SCIENCES

Graduate Program in Biosciences and Pathophysiology.....	28
Graduate Program in Health Sciences.....	29
Graduate Program in Pharmaceutical Sciences	30
Graduate Program in Nursing.....	31
Graduate Program in Integrated Dentistry	32

HUMAN SCIENCES

Graduate Program in Social Sciences.....	33
Graduate Program in Education.....	34
Graduate Program in Philosophy	35
Graduate Program in History.....	36
Graduate Program in Psychology.....	37

APPLIED SOCIAL SCIENCES

Graduate Program in Business Administration.....	38
Graduate Program in Accounting Sciences.....	39
Graduate Program in Economics Sciences.....	40

LINGUISTICS, LANGUAGES AND ARTS

Graduate Program in Literature	41
--------------------------------------	----

ASSOCIATE PROGRAMS

Graduate Program in Bioenergy.....	42
Graduate Program in Physical Education.....	43
Graduate Program in Architecture and Urbanism	44

PROFESSIONAL MASTER'S DEGREE

Graduate Program in Agroecology.....	45
Graduate Program in Public Policies	46
National Professional Master's Degree in Physics Education	47
Professional Master's Degree in Mathematics in Nationwide Network.....	48
Professional Master in Literature.....	49

Graduate Program in Agronomy

Area:

**Agricultural
Sciences**

Level

Academic Degree – Master's and
Doctorate

Research Areas

Crop production and management;
Plant morphogenesis, and biochemical and molecular characterization of plants; Weed management and dynamics of herbicides in the environment; Local plants' disease control; Soil chemistry, soil fertility and plant nutrition; Soil physics, soil and water management

ADDRESS:

State University of Maringá
Center of Agricultural Sciences - CCA
Block J-45
5.790, Colombo Ave. - Jd. Universitário
Maringá - PR
ZIPCODE: 87020-900

PHONE #:

++ 55 (44) 3011-8940



The Graduate Program in Agronomy (PGA) is included in the forefront of graduate programs in Agricultural Sciences classified as level 6 by Capes. The program provides researchers, teachers, and other specialized professionals with a solid scientific and cultural training in a way they can make outstanding contributions to national, regional and local agriculture and agro-industry. Researches from the program aim at increasing the efficiency of crops for food, fiber, and bio-energy production, focused on the sustainable use of land resources and the improvement of the quality in the human environment. The program receives scholarships from the Ministry of Education (Capes), National Council for Research and Development (CNPq), and Parana State Government (Araucaria Foundation). The program has several research agreements with foreign universities and research institutes where graduate students can improve their knowledge and strengthen their network for the purpose of publications in scientific journals with high impact.

sec-pga@uem.br

www.pga.uem.br

Graduate Program in Food Sciences

Area:

**Agricultural
Sciences**

Level:

Academic Degree – Master's and
Doctorate

Research Areas:

Functionality and Food Safety; Quality
of animal breeding and Vegetable;
Quality in the processing of animal,
plant and residue by-products

ADDRESS:

State University of Maringá
Center of Agricultural Sciences - CCA
Block J-45
5.790, Colombo Ave. - Jd. Universitário
Maringá - PR
ZIPCODE: 87020-900

PHONE #:

++ 55 (44) 3011-8997



The Graduate Program in Food Sciences (PPC) aims to train and qualify human resources (masters and doctors) to perform in higher education, research institutions and industries by supporting the scientific and technologic advancement of the food area. The Program is classified as level 4 by Capes. The Program is set for researchers and teachers and bachelors from the Food Engineering, Chemical Engineering, Engineering, Biochemistry, Food Technology, Chemistry, Nutrition, Agronomy, Animal Technology, Biological Sciences, Pharmacy, Veterinary Medicine, Biomedicine courses, and to bachelors from other courses, as well as other professionals who can be considered at the committee selection.

sec-ppc@uem.br

www.ppc.uem.br

Graduate Program in Agricultural Sciences

Area:

Agricultural Sciences



The Graduate Program in Agricultural Sciences (PAG) supplies the demands of the University in the courses of Agronomy, Veterinary Medicine and Agricultural Engineering. The program aims at incorporating science and technology by encouraging active exploration, personal involvement, curiosity, the use of senses, and the intellectual efforts in the formulation of questions and the search for innovative answers to increase the standards of productivity and quality of different products that compose the production network of the agribusiness in Brazil. The Program is classified as level 3 by Capes.

Level

Academic Degree – Master's

Research Areas

Systems of Agricultural and Animal Production; Use and Management of Soil and water

ADDRESS:

State University of Maringá
Regional Campus of Umuarama
Center of Agricultural Sciences - CCA
No number, Paca Road
Phone: #: ++ 55 (44) 3621- 9409
ZIPCODE 877507-190
Umuarama- PR

PHONE #:

++ 55 (44) 3621-9414

sec-pag@uem.br

www.pag.uem.br

Graduate Program in Genetics and Breeding

Area:

**Agricultural
Sciences**

Level:

Academic Degree – Master's and
Doctorate

Research Areas:

Plant Breeding and Quantitative Genetics; Vegetable Genetics; Molecular and Microorganisms Genetics; Animal Genetics.

ADDRESS:

State University of Maringá
Center of Agricultural Sciences - CCA
Block J-45
5.790, Colombo Ave. - Jd. Universitário
Maringá - PR
ZIPCODE: 87020-900

PHONE #:

++ 55 (44) 3011-8984



The Graduate Program in Genetics and Breeding (PGM) is the only program in Genetics and Breeding of Southern Brazil. It is considered a Program of Excellence, classified as 5 on Capes evaluation since its first triennial assessment (2004-06). The Faculty members consist of dedicated Professors, where 73% of its members receive Research Productivity Grants from CNPq and Araucaria Research Foundation. PGM Graduate Program is intended for bachelors, researchers and teachers graduated in Agronomy, Biology, Animal Sciences, and related areas. The Masters' program of study lasts 24 months while Doctorate degree is set for 48 months. The PGM receives financial support and scholarships from Capes, CNPq, Araucaria Research Foundation, Finep and Embrapa, among other public and private companies.

sec-pgm@uem.br

www.pgm.uem.br

Graduate Program in Sustainable Production and Animal Health

Area:

**Agricultural
Sciences**

Level:

Academic Master's degree

Research Areas:

Sustainable Production
Animal Health

ADDRESS:

State University of Maringá
Regional Campus of Umuarama
Center of Agricultural Sciences - CCA
No number, Paca Road
Phone #: ++ 55 (44) 3621- 9409
ZIPCODE 877507-190
Umuarama- PR

PHONE #:

++ 55 (44) 3621-9412



The Graduate Program in Sustainable Production and Animal Health promotes active exploration, personal involvement, curiosity, use of senses and intellectual effort in formulating questions, seeking innovative answers that can help raise the standard of productivity and quality of the many products that make up the supply chain agribusiness in Brazil, associated with the quality of human and animal life. The Program is classified as level 3 by Capes. The students have the ability to participate, develop and evaluate with critical sense, the research, the teaching and the extension with a multidisciplinary perspective on integrated management systems, prevention, control and characterization of diseases, dealing with health protection, as long as animal and environmental biosafety.

dmv-sec@uem.br

www.cau.uem.br

Graduate Program in Animal Sciences

Area:

Agricultural Sciences

Level:

Academic Degree – Master's and Doctorate

Research Areas:

Determination of nutritional requirements in ruminant and nonruminant animals; assessment of traditional food, residues and by-products of the agro-industry; Study of the interface nutrition-environment - animal behavior - breeding; Estimation of consumption by grazing animals; Ecophysiology and production systems of forage and animal performance on pastures; System of production and supply; Genetic evaluation and selection and breeding programs; Control of water quality and aquaculture production; characterization and development of aquaculture strains for cultivation; behavior, production and pollination with bees; Application and evaluation of techniques for processing animal products and byproducts; Evaluation of the conservation quality and nutritional value of silage and hay

ADDRESS:

State University of Maringá
Center of Agricultural Sciences - CCA
Block J-45
5.790, Colombo Ave. - Jd. Universitário
Maringá - PR
ZIPCODE: 87020-900

PHONE #:

++ 55 (44) 33011-8948



The Graduate Program in Animal Sciences (PPZ) aims to train faculty members, researchers and specialized professionals to perform research and technologic development in many fields of Animal Sciences. The Program is classified as level 5 by Capes. It is directed to professionals in the area of Agricultural Sciences and related areas, bachelors in renowned national institutions and fellow foreign institutions.

sec-ppz@uem.br

www.ppz.uem.br

Graduate Program in Comparative Biology

Area:

**Biological
Sciences**



The Graduate Program in Comparative Biology (PGB) aims the professional qualification of biologists in different activities described by the Brazilian Federal Council of Biology, in the areas of Genetics, Molecular Biology, Botany, Morphology, Physiology, Animal Sciences, Ecology, Biochemistry, Embryology and Microbiology. The Program is classified as level 4 by Capes.

Level:

Academic Degree – Master's and
Doctorate

Research Areas:

Structure and Function of Organic
Diversity, Structure and Function of
Organic Interactions

ADDRESS:

State University of Maringá
Center of Biological Sciences - CCB
Block G-80
5.790, Colombo Ave. - Jd. Universitário
Maringá - PR
ZIPCODE: 87020-900

PHONE #:

++ 55 (44) 3011-3750

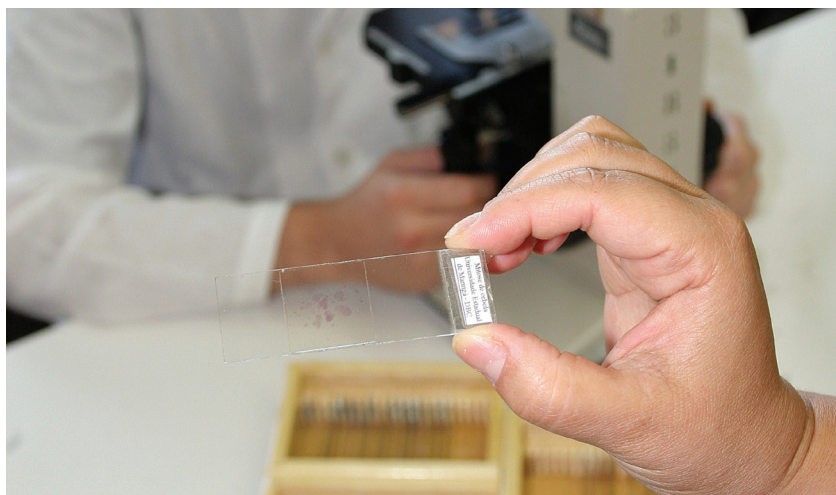
sec-pgb@uem.br

www.pgb.uem.br

Graduate Program in Environmental Biotechnology

Area:

**Biological
Sciences**



The Graduate Program in Environmental Biotechnology (PBA) aims to train professionals to study, change, synthesize and produce materials from living matter (microorganisms, animals and plants), making available processes and products to provide a greater economy, efficacy, competitiveness and adaptability for their final purpose. The Program is classified as level 3 by Capes.

Level

Academic Degree – Master's

Research Areas

Mutagenesis and Environmental Monitoring, Biodiversity, Biocatalysis and Biotransformation; Bioprospecting and biological control

ADDRESS:

State University of Maringá
Center of Biological Sciences - CCB
Block H-67
5.790, Colombo Ave. - Jd. Universitário
Maringá - PR
ZIPCODE: 87020-900

PHONE #:

++ 55 (44) 3011-4680

sec-pba@uem.br

www.pba.uem.br

Graduate Program in Biological Sciences

Area:

Biological Sciences

Level

Academic Degree – Master's and Doctorate

Research Areas

Biochemistry and Genetics of Micro-organisms, Molecular and Structural Biology, Biochemistry and Genetics, Metabolism, Bioenergetics and Cell Physiology

ADDRESS:

State University of Maringá
Center of Biological Sciences - CCB
Block I-89
5.790, Colombo Ave. - Jd. Universitário
Maringá - PR
ZIPCODE: 87020-900

PHONE #:

++ 55 (44) 3011-4908



In the Graduate Program in Biological Sciences (PBC) are accomplished credits in biochemistry, molecular biology and cell biology, besides advanced courses in specialized areas. The Program aims to train professionals in research and teaching careers, as well as transforming agents in the dissemination of the scientific knowledge. Students also receive training in teaching, helping in theoretical and practical activities in the undergraduate courses of the involved departments, which integrate undergraduate and graduate education. The Program is classified as level 5 by Capes.

sec-pbc@uem.br

<http://www.pbc.uem.br/>

Graduate Program in Ecology of Continental Water Environments

Area:

**Biological
Sciences**

Level

Academic Degree – Master's and Doctorate.

Research Areas

Ecology of rivers and floodplains
Ecology and management in reservoirs.

ADDRESS:

State University of Maringá
Center of Biological Sciences - CCB
Block G-90
5.790, Colombo Ave. - Jd. Universitário
Maringá - PR
ZIPCODE: 87020-900

PHONE #:

++ 55 (44) 3011-4630 ou
3011-4631



The Graduate Program in Ecology of Continental Water Environments (PEA) aims to train professionals to deal with environmental matters in an integrated way, in order to preserve and monitor the ecosystems, performing an essentially holistic approach. The Program is classified as level 6 by Capes. Projects supported by funding agencies allow the group to perform their research in the same geographic area (rivers, creeks, flood plains and reservoirs in the high Parana River hydrographic basin). The knowledge attained supported the creation of a Protection Area in the Islands and valleys in the high Parana River floodplain (last part of this river free from reservoirs in the Brazilian territory). The PEA also helped the definition of the borders of Ilha Grande National Park and the Ivinhema State Park. Thus, it aims to grant graduate students an encompassing training to preserve and handle natural resources, which are broadly approached in their projects, offering then an excellent opportunity for the achievement of their goals.

secretaria@pea.uem.br

www.pea.uem.br

Graduate Program in Physiological Sciences

Area:

**Biological
Sciences**



The Graduate Program in Physiological Sciences (PFS) starts the first class in 2015 with 14 permanent professors and an 1 collaborator. The course objectives to enhance the knowledge of Physiological Sciences, combining interdisciplinary themes. The Program is classified as level 3 by Capes. The intention is to integrate theoretical knowledge of physiology, biochemistry, pharmacology and histology and their experimental tools applicable in understanding how the human body works, contributing to the expansion and strengthening of scientific work in this field of knowledge.

Level

Academic Master's degree

Research Areas

Integrative Physiology;
Physiology of exercise

ADDRESS:

State University of Maringá
Center of Biological Sciences - CCB
Block H-79
5.790, Colombo Ave. - Jd. Universitário
Maringá - PR
ZIPCODE: 87020-900

PHONE #:

++ 55 (44) 3011-1379

sec-pfs@uem.br

www.dfs.uem.br/

Graduate Program in Biostatistics

Area:

**Exact Sciences
and Earth
Sciences**

Level

Academic Degree – Master's

Research Areas

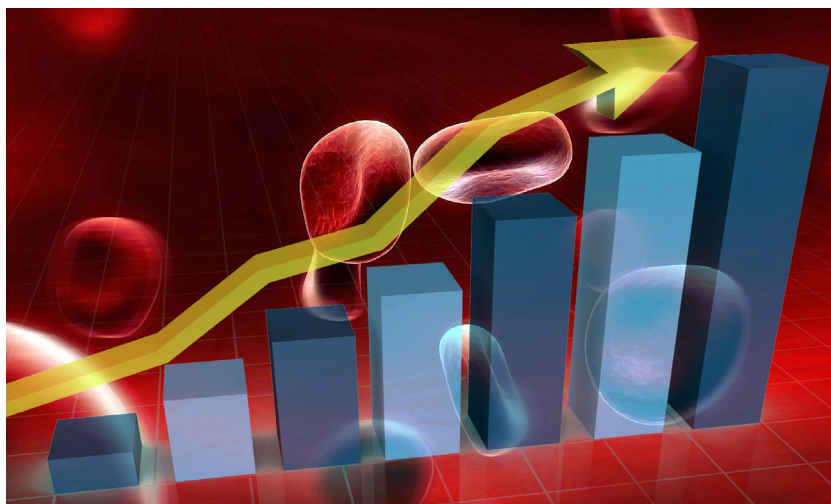
Quantitative methods applied to health;
Applied statistics

ADDRESS:

State University of Maringá
Center of Exact Sciences - CCE
Block E-90
5.790, Colombo Ave. - Jd. Universitário
Maringá - PR
ZIPCODE: 87020-900

PHONE #:

++ 55 (44) 3011-4338



The Graduate Program in Biostatistics is the first interdisciplinary master's program in Brazil, particularly in the southern region, which lacks professionals with knowledge in the statistic methodology area. The Program is classified as level 3 by Capes and aims to: provide professionals and researchers with conditions to explore their technical and analytical knowledge deeper; update the training of researchers, teachers and professionals bearing in mind the adoption of new statistic methods and techniques; investigate and contribute with research done by the bioequivalence and medical research group; take part in work groups.

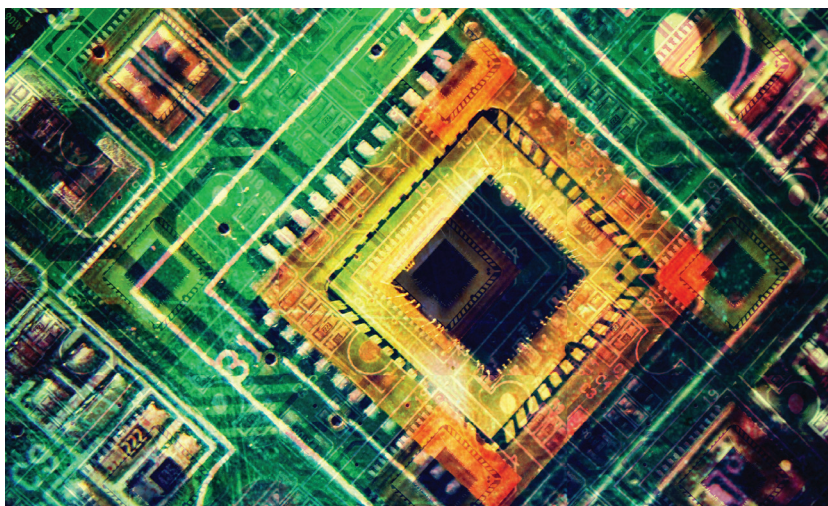
sec-bioestatistica@uem.br

www.pbe.uem.br

Graduate Program in Computer Science

Area:

**Exact Sciences
and Earth
Sciences**



The Graduate Program in Computer Science (PCC) aims to provide its students the opportunity to deepen their knowledge of the area and improve their critical sense, which will enable them to reach a high standard of scientific, technical and professional competence. In order to achieve that, the graduate students have at their disposal adequate resources for developing scientific research at UEM and its surrounding areas. The Program is classified as level 3 by Capes. Besides forming qualified professionals to work in Higher Education, the program also prepares researchers for scientific, technological and innovation development, as well as strengthening research groups.

Level

Academic Degree – Master's

Research Areas

Information Systems; Computer Systems; Computational Intelligence

ADDRESS:

State University of Maringá
Center of Technology - CTC
Block C-56
5.790, Colombo Ave. - Jd. Universitário
Maringá - PR
ZIPCODE: 87020-900

PHONE #:

++ 55 (44) 3011-4345

sec-pcc@uem.br

www.din.uem.br/mestrado

Graduate Program in Education for Science and Mathematics

Area:

**Exact Sciences
and Earth
Sciences**

Level

Academic Degree – Master's and
Doctorate

Research Areas

Teaching and media resources for
Science and Mathematics continuing
education; Teachers training, curricular
renewal and school evaluation in
the Science and Mathematics areas;
Science, technology, environment and
society; History, epistemology and
Science ethics

ADDRESS:

State University of Maringá
Center of Exact Sciences - CCE
Block F-67
5.790, Colombo Ave. - Jd. Universitário
Maringá - PR
ZIPCODE: 87020-900

PHONE #:

++ 55 (44) 3011-4827



The Graduate Program in Education for Science and Mathematics (PCM) has a response to train students who work in basic education and Higher education at private and public institutions as teachers or researchers. Through this perspective, the course is nurtured by the following goals: training qualified personnel for working in the educational system at all levels, aiming to create opportunities for discussing referential and techniques in the educational context; articulating the investigation and action of different areas related to Science and Mathematics education with the necessity of teachers' reflection on their education practices; contributing with the improvement of education and the development of a field of research on scientific education, based on an interdisciplinary, transdisciplinary and multidisciplinary knowledge project. The Program is classified as level 4 by Capes.

sec-pcm@uem.br

www.pcm.uem.br

Graduate Program in Physics

Area:

Exact Sciences and Earth Sciences

Level

Academic Degree – Master's and
Doctorate

Research areas

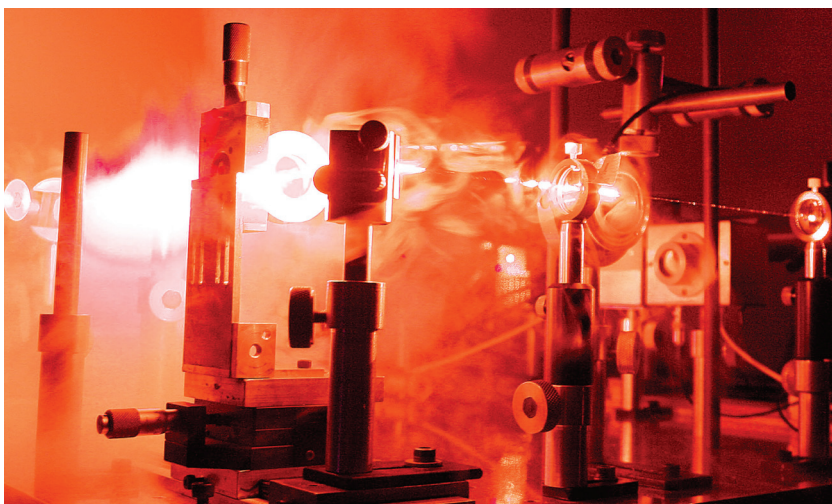
Characterization of Nuclear Materials; Structural and Magnetic Characterization of Materials; Thermo-Optics and Mechanical Characterization of Materials; Densitometry and Rheology; Development of Multifunction Devices; Electro-Optical Devices; Effects of Radiation Pressure; Impedance Spectroscopy of Isotropic and Anisotropic Fluids; Photoacoustic Spectroscopy; Photothermal Spectroscopy; Infrared Spectroscopy; Vibrational Spectroscopy; Magnetic Compounds Study; Usual and Anomalous Diffusive Phenomena; Physics Applied to Natural and Social Systems; Investigation of Structural and Microstructural Properties of Monolithic Polycrystalline Multiferroics; Investigation of Ferroic (Ferroelectric, Dielectric, Piezoelectric, Magnetostrictive, Electrostrictive, Magnetic and Pyroelectric) Properties of Multiferroic Monolithic Polycrystalline Multiferroics; Luminescence and Spectroscopy of Solids; Generalized Statistical Mechanics; Liquid Crystal and Polymer Mixtures: Stabilized Phases, Microscopy and Applications; Mathematical Modeling of Light-Material Interaction Effect Applied in Experimental Techniques; Molecular Orientation and Surface Effects in Thermotropic and Anisotropic Liquid Crystals; Parameters: Order and Nonlinear; Production of Nano Particles by Laser Ablation; Production and Characterization of Optical glasses; Electrical Properties; Uniaxial and Biaxial Phase Transitions; Optical and Spectroscopic Properties of Materials; Thermal properties; Thermo-Optical Properties; Laser Induced Photo Chemical Reactions and Mass diffusion; Optimization and Simulation of Structural and Physical Properties of Materials by AB Initio Calculations; Materials Synthesis by means of Several techniques; Synthesis of Monolithic Polycrystalline Multiferroic (Magnetoelectrics, Magnetoelastics, Toelásticos, Electroelásticos, Piezoelectrics and Piezomagnetism) Polycrystalline Monolithic; Biological Systems; Complex Systems; Transitions between Textures and Wetness in Chiral Nematic.

ADDRESS:

State University of Maringá
Center of Exact Sciences - CCE
Block G-68
5.790, Colombo Ave. - Jd. Universitário
Maringá - PR
ZIPCODE: 87020-900

PHONE #:

++ 55 (44) 3011-5938



Classified as level 5 by Capes, the Graduate Program in Physics (PFI) aims to form masters and doctors who are capable of contributing with scientific and technological advancement through the development of projects and innovative actions which take place at the border of the Condensed Matter Physics. The Program currently consists of 17 permanent professors, who promote an intense scientific and technological exchange with national and international education and research institutions. The program also has scholarship funding from Capes, CNPq and Araucária Foundation.

sec-pfi@uem.br

www.pfi.uem.br

Graduate Program in Geography

Area:

**Exact and Earth
Sciences**



Acknowledged by Capes in 1997, the Graduate Program in Geography (PGE) supplies the demand for qualified professionals in Geographical Sciences and related areas who act on academic education, extension and related researches to analysis of space production, territorial dynamics and environmental analysis. Classified as level 5 by Capes, the Program has as one of its goals training professionals to work in teaching and researching fields in public and private institutions.

Level

Academic Degree – Master's and
Doctorate

Research areas

Environmental analysis; Space production and territorial dynamics

ADDRESS:

State University of Maringá
Center of Human Sciences, Literature
and Arts - CCH
Block H-12
5.790, Colombo Ave. - Jd. Universitário
Maringá - PR
ZIPCODE: 87020-900

PHONE #:

++ 55 (44) 3011-4731

sec-pge@uem.br

www.pge.uem.br

Graduate Program in Mathematics

Area:

Exact and Earth Sciences

Level

Academic Degree – Master's and Doctorate

Research Areas

Functional and ordinary differential equations; non-linear equations of mathematical physics; stabilization and control of distributed systems; differential geometry, applied mathematics; discrete/combinatory mathematics; geometric theory of topologic dynamics control; groups, rings, and application theory; theory of Lie and applications; algebraic theory of singularities

ADDRESS:

State University of Maringá
Center of Exact Sciences - CCE
Block F-67
5.790, Colombo Ave. - Jd. Universitário
Maringá - PR
ZIPCODE: 87020-900

PHONE #:

++ 55 (44) 3011-4504



The Graduate Program in Mathematics (PMA), created in 1999, aims to train higher education faculty members and researchers, as well as the development of researches on the Mathematics area. It also develops activities of disclosing Mathematics and interacting between faculty members and students, by means of scientific events and periodical seminars. The Program is classified as level 4 by Capes.

sec-pma@uem.br

www.pma.uem.br

Graduate Program in Chemistry

Area:

Exact and Earth Sciences

Level

Academic Degree – Master's and Doctorate

Research areas

Chemical analysis by injection in flux; Development of medicines to photodynamic therapy; Development of analytical methods; Synthesis, structure, conformation, and stereochemistry; Organic physicochemical, polymers and composites; Environmental analytical chemistry and trace analysis; Bioinorganic chemistry; Food chemistry; Material chemistry; Natural products chemistry; Organic synthesis

ADDRESS:

State University of Maringá
Center of Exact Sciences - CCE
Block 23
5.790, Colombo Ave. - Jd. Universitário
Maringá - PR
ZIPCODE: 87020-900

PHONE #:

++ 55 (44) 3011-4332



Classified as level 5 by Capes, the Graduate Program in Chemistry (PQU) has 31 permanent advisor professors who work within 12 research areas. For the master degree, the student must have 14 academic credits, being six in compulsory disciplines and eight in complementary elective disciplines, with the maximum length of 24 months to graduate. For the doctorate, the student must have 28 academic credits, being six in compulsory disciplines and 22 in complementary elective disciplines, with the maximum length of 48 months to graduate. The Program has scholarships by Capes, CNPq, and Araucária Foundation.

sec-pqu@uem.br

www.pqu.uem.br

Graduate Program in Civil Engineering

Area:

Engineering



The Graduate Program in Civil Engineering (PCV) aims to contribute to the scientific and technological development, training skilled professionals to understand, develop and disseminate new concepts, techniques and procedures inherent in the field of modern structural engineering. Through teaching and research, the program aims to prepare engineers able to handle advanced techniques for analyzing structural designs involving computing resources and new materials. The Program is classified as level 3 by Capes.

Level

Academic Degree – Master's

Research Areas

Analysis of structural systems; technology of structural materials

ADDRESS:

State University of Maringá
Center of Technology - CTC
Block C-67
5.790, Colombo Ave. - Jd. Universitário
Maringá - PR
ZIPCODE: 87020-900

PHONE #:

++ 55 (44) 3011-3864

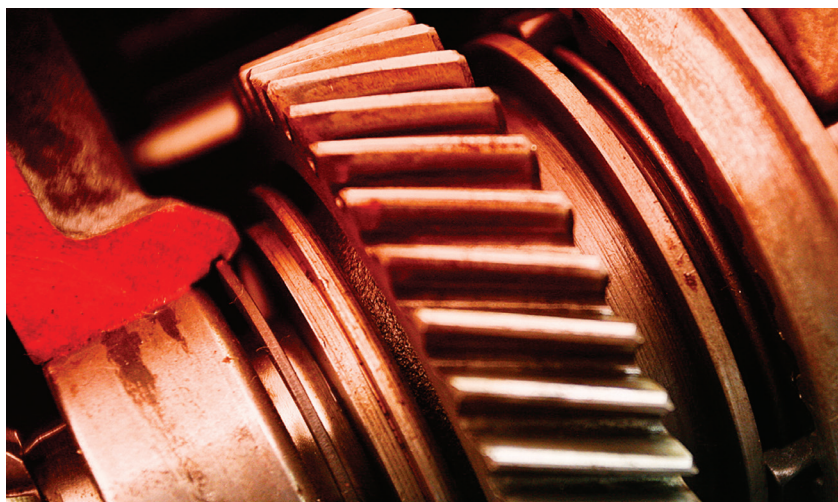
sec-pcv@uem.br

www.pcv.uem.br

Graduate Program in Mechanical Engineering

Area:

Engineering



The Graduate Program in Mechanical Engineering (PEM) was approved in 2012 by Capes and currently offers 10 positions in two areas of concentration: Thermal Sciences and Materials. The program has a faculty made up of 11 doctors with degrees in Mechanical Engineering, Chemical Engineering, Physics and Chemistry. The Program is classified as level 3 by Capes.

Level

Academic Degree – Master's

Research Areas

Metallic materials, non-metallic materials; Computational methods in transport phenomena; Energy analysis of equipment and thermal systems

ADDRESS:

State University of Maringá
Center of Technology - CTC
Block 104
5.790, Colombo Ave. - Jd. Universitário
Maringá - PR
ZIPCODE: 87020-900

PHONE #:

++ 55 (44) 3011-5849

sec-pem@uem.br

www.pem.uem.br

Graduate Program in Chemical Engineering

Area:

Engineering

Level

Academic Degree – Master's and Doctorate

Research Areas

Biocatalysis and biochemical processes; Catalysis, Kinetics and reactors; Phase equilibrium and thermodynamic properties; Management, control and environmental preservation; Modeling, control and automation of processes; Separation processes and particulate systems; Synthesis and process optimization

ADDRESS:

State University of Maringá
Center of Technology - CTC
Block E-46
5.790, Colombo Ave. - Jd. Universitário
Maringá - PR
ZIPCODE: 87020-900

PHONE #:

++ 55 (44) 3011-4745



The main goal of the Graduate Program in Chemical Engineering (PEQ) is to qualify teachers, researchers and professionals to develop activities with solid training in the basics of Chemical Engineering and meet the growing demand of trained professionals in educational institutions, research centers and industries. Another objective is to produce scientific and technological knowledge, contributing to regional and national development. The Program is classified as level 5 by Capes.

peq@deq.uem.br

www.deq.uem.br/peq

Graduate Program in Urban Engineering

Area:

Engineering



The Graduate Program in Urban Engineering (PEU) aims to improve the quality of teaching and research, providing students with scientific background and broad cultural depth, developing research ability and creative power in this important branch of science. Classified as level 4 by Capes, the PEU is structured so that the trained professional has the necessary conceptual and practical control of projects in their online research, as well as basic knowledge in other Research Areas related to their sphere of action to exercise the integrated practice of urban intervention.

Level

Academic Degree – Master's

Research Areas

Urban infrastructure and technology;
Planning and management of urban systems

ADDRESS:

State University of Maringá
Center of Technology - CTC
Block C-67
5.790, Colombo Ave. - Jd. Universitário
Maringá - PR
ZIPCODE: 87020-900

PHONE #:

++ 55 (44) 3011-4052

sec-peu@uem.br

www.peu.uem.br

Graduate Program in Biosciences and Pathophysiology

Area:

Health Sciences

Level

Academic Degree – Master's and
Doctorate

Research Areas

Pathogens of a medical interest;
etio-physiopathology of human and
animal diseases; Eco-epidemiology and
disease control

ADDRESS:

State University of Maringá
Center of Health Sciences - CCS
Block T-20
5.790, Colombo Ave. - Jd. Universitário
Maringá - PR
ZIPCODE: 87020-900

PHONE #:

++ 55 (44) 3011-4805



The Graduate Program in Biosciences and Pathophysiology (PBF) is aimed at qualifying personnel to teach in higher education and to perform activities in research and professional performance. It is made up of a systematically organized and regular cycle of studies and of research activities. It has as its main goal to enable masters, doctors and researchers in Biosciences and Pathophysiology to an investigative scientific practice that supply the demand of teaching and research institutions as well as other health bodies. It provides a discussion and reflective environment about diseases and harms that concern human beings, thus developing a critic reflection for the improvement and adaptation to new health trends. The Program is classified as level 4 by Capes.

sec-pbf@uem.br

www.pbf.uem.br

Graduate Program in Health Sciences

Area:

Health Sciences

Level

Academic Degree – Master's and Doctorate

Research Areas

Human mycosis; Leishmaniasis; Bacterial and Viral Diseases; Chagas disease and molecular biology of *Trypanosoma cruzi*; Zoonoses and other parasitosis of medical interest; Food and health implications; Chronic diseases; Intercurrences and confrontation in health problems

ADDRESS:

State University of Maringá
Center of Health Sciences - CCS
Block 126
5.790, Colombo Ave. - Jd. Universitário
Maringá - PR
ZIPCODE: 87020-900

PHONE #:

++ 55 (44) 3011-4564



The Graduate Program in Health Sciences (PCS) has 24 permanent professors, out of which 23 work full-time and under exclusive dedication, plus a volunteer professor. It consists of eight research areas in two areas of concentration. Until March, 2015, 266 masters and 17 doctors were formed by the program. The program's classification according to Capes rating is 4, and it receives financial resources (scholarships and funding for projects) from Capes and Araucária Foundation.

sec-pcs@uem.br

www.pcs.uem.br

Graduate Program in Pharmaceutical Sciences

Area:

Health Sciences



The Graduate Program in Pharmaceutical Sciences (PCF) aims at human resources training for teaching, research and for the production sector of Natural Products and Biologically Active Synthetics, whose skills are strongly associated to knowledge production and the creation of technologies that are committed to the solution of problems related to our population health in local and national contexts. The Program is classified as level 5 by Capes. The research areas seek for low cost accessible therapeutic alternatives that are confirmed to be efficient and safe in a sustainable way. The aim of the program is also developing products based on natural products and synthetics applying state-of-the-art technology, thus, contributing with the population health development, as well as the medicines, drugs and cosmetics industry in Brazil.

Level

Academic Degree – Master's and Doctorate

Research Areas

Phytochemistry, quality control and technology of phytotherapeutic products;
Pharmacology of natural products

ADDRESS:

State University of Maringá
Center of Health Sciences - CCS
Block K-68
5.790, Colombo Ave. - Jd. Universitário
Maringá - PR
ZIPCODE: 87020-900

PHONE #:

++ 55 (44) 3011-4835

ppcfar@uem.br

www.pcf.uem.br

Graduate Program in Nursing

Area:

Health Sciences

Level

Academic Degree – Master's and
Doctorate

Research Areas

Health care in the different life cycles;
Health care management

ADDRESS:

State University of Maringá
Center of Health Sciences - CCS
Block 002
5.790, Colombo Ave. - Jd. Universitário
Maringá - PR
ZIPCODE: 87020-900

PHONE #:

++ 55 (44) 3011-4494



The Nursing Graduate Program (PSE) is intended to train qualified staff for higher education teaching and research activities. It aims at forming researchers, faculty members and nurses who are able to contribute with the excellence of care practices, through a critical view of a methodical nature, as well as communicational, sociopolitical and technical, that focus on health promotion. The Program is classified as level 4 by Capes. The education process qualifies masters and doctors preparing them properly for building knowledge that can support nursing performance in teaching, research and assistance, bearing in mind the improvement of the population health conditions.

sec-pse@uem.br

www.pse.uem.br

Graduate Program in Interdisciplinary Dentistry

Area:

Health Sciences

Level

Academic Degree – Master's and Doctorate

Research Areas

Epidemiology; Prevention and education in dentistry; Dental treatments and their biological basis

ADDRESS:

State University of Maringá
Center of Health Sciences - CCS
Block S-08
1.540, Mandacaru Ave.
Maringá - PR
ZIPCODE: 87080-000

PHONE #:

++ 55 (44) 3011-9051



The Post-Graduation Interdisciplinary Dentistry Program (PGD) is composed of twelve permanent professors and six collaborators, who work in different Dental specialties and other similar areas. The Program has Master's and Doctoral courses, with contemporary contents, skills and competences, and its purpose is to educate a docent and a researcher in Interdisciplinary Dentistry, to work in the education of qualified and resolute dentists, considering the system in force in the country. These professionals must envisage the integrality of care, have a generalist and humanist approach to work, in addition to critical and reflective thinking. They must base themselves on the understanding that health is a collective process of work that results in the provision of health services. Exercise of the profession must be based on ethical and legal principles and on understanding of the social, cultural and economic reality of their medium, directing their attention to the transformation of reality into benefit to society. The Master and Doctor must have the independence of permanent self-learning, considering the universe of research, teaching and extension. The Post-Graduation Program in Interdisciplinary Dentistry is assessed as Concept 4 by CAPES. The activities are developed in an environment of discussion and team work, with the problematization of various teaching situations, including integrated dental planning, in conjunction with graduation, and with fields of training in the municipal health care network. Moreover, the post-graduate student brings the practices of investigation and scientific disclosure closer to local reality, thereby integrating research, teaching and extension.

sec-pgo@uem.br

www.pgo.uem.br

Graduate Program in Social Sciences

Area:

Human Sciences

Level

Academic Degree – Master's

Research areas

Urban Dynamics and Public Policies;
Societies and Cultural Practices; Institutions and Political processes

ADDRESS:

State University of Maringá
Center of Human Sciences, Literature and Arts - CCH
Block H-12
5.790, Colombo Ave. - Jd. Universitário
Maringá - PR
ZIPCODE: 87020-900

PHONE #:

++ 55 (44) 3011-8905



The research areas of the Graduate Program in Social Sciences (PGC) aims to qualify the students in order to understand the theories, methods and research techniques, and also to encourage production and publication of scientific knowledge and their relation with other research fields. The Program stimulates reflection on local and regional realities of Paraná State, from the analysis of Brazilian social-economic shaping, in order to supply the demand for professionals who are committed with teaching with quality in all levels and with the creation of environments for a research applied to social development. The Program is classified as level 3 by Capes.

sec-pgc@uem.br

www.pgc.uem.br

Graduate Program in Education

Area:

Human Sciences



The Graduate Program in Education (PPE) was created in 1990 under an agreement with the College of Education of State University of Campinas, as the first Master's course in the countryside of Paraná, contributing to training of researchers in the region and having an important role of multiplying the knowledge. The Program is classified as level 5 by Capes. In 2006, the structure of the Program had a new framework to achieve more integration between the researches developed and the elaboration of the doctorate course proposal and, nowadays, it presents only one area of research: Education.

Level

Academic Degree – Master's and Doctorate

Research areas

History and historiography of education; Teaching, learning and teachers' training; Policies and management in education

ADDRESS:

State University of Maringá
Center of Human Sciences, Literature and Arts - CCH
Block I-12
5.790, Colombo Ave. - Jd. Universitário
Maringá - PR
ZIPCODE: 87020-900

PHONE #:

++ 55 (44) 3011-4853

sec-ppe@uem.br

www.ppe.uem.br

Graduate Program in Philosophy

Area:

Human Sciences

Level

Academic Degree – Master's

Research areas

Metaphysics and Knowledge; Esthetics and social philosophy

ADDRESS:

State University of Maringá
Center of Human Sciences, Literature and Arts - CCH
Block H-35
5.790, Colombo Ave. - Jd. Universitário
Maringá - PR
ZIPCODE: 87020-900

PHONE #:

++ 55 (44) 3011-8983



The Graduate Program in Philosophy (PGF) contributes to high school and high education teachers' qualification, aiming to improve teaching quality, research and extension. The Program is classified as level 3 by Capes. It produces scientific knowledge regarding the strict requirements of the recognized national and international philosophy research methods. And also provides conditions to severe investigation of texts and authors of philosophic and scientific relevance, with emphasis on metaphysic and political themes of ancient and medieval history and philosophy, as well as the ones concerning critical foundation of modern reason and its crisis in contemporary philosophy. It also promotes interchanges with other graduate programs in philosophy in Brazil and abroad and stimulates the creation of groups of work which aim to strength the National Association of Graduation in Philosophy (Anpof).

sec-pgf@uem.br

www.pgf.uem.br

Graduate Program in History

Area:

Human Sciences

Level

Academic Degree – Master's and Doctorate

Research areas

Institutions of History of ideas; Borders, populations and cultural assets, Politics and social movements

ADDRESS:

State University of Maringá
Center of Human Sciences, Literature and Arts - CCH
Block H-12
5.790, Colombo Ave. - Jd. Universitário
Maringá - PR
ZIPCODE: 87020-900

PHONE #:

++ 55 (44) 3011-4895



The Graduate Program in History (PPH) aims to graduate high level researchers to produce relevant historic knowledge to society and to contribute to the disclosure of Brazilian historiography production abroad. To achieve that, the university has been developing interchange with diverse Brazilian and international universities, widening research projects financed by funding agencies and publishing one of the best journals in the area: *Diálogos*, that may be reached at the site www.uem.br/dialogos. Moreover, the Program has excellent research infrastructure and the faculty is highlighted for their extracurricular activities, as members of editorial boards of scientific journals, Brazilian and international publishers and Superior Councils of funding agencies. The Program is classified as level 4 by Capes.

sec-pph@uem.br

www.pph.uem.br

Graduate Program in Psychology

Area:

Human Sciences

Level

Academic Degree – Master's and
Doctorate

Research areas

Psychoanalysis and civilization; Epistemology and psychology praxis; Educational processes and social practices

ADDRESS:

State University of Maringá
Center of Human Sciences, Literature
and Arts - CCH
Block 10
5.790, Colombo Ave. - Jd. Universitário
Maringá - PR
ZIPCODE: 87020-900

PHONE #:

++ 55 (44) 3011-3871



The Graduate Program in Psychology (PPI) aims to expand the conceptual universe of professionals of Human Sciences, especially in the area of psychology, having as main axis the constitutions of the subject and historicity. Before this objective, the activities of training of high education researchers and teachers have resulted in the review and elaboration of theories and methodologies in the psychological field. The Program is classified as level 4 by Capes. At the end of the course, the student must present scientific skills and competence to the ability of critical universality, execution and accompaniment of research and teaching activities. The observation of such requirements continues the work of under-graduate courses and solidifies scientific training of psychology knowledge for the professional to act in different contexts. Diversity of theoretical-methodological perspectives is necessary to understand the human being, that offers support to multi-professional action, team action and integrates theory and practice in different actions in education, health, work, social assistance and other fields.

sec-ppi@uem.br

www.ppi.uem.br

Graduate Program in Business Administration

Area:

Applied Social Sciences



The concentration area of the Graduate Program in Business Administration (PPA) seeks candidates with academic interests in teaching and researching. The development of competences, analytical perspective and ability of executing research projects concerning the presented research fields demands theoretical support in organizational and entrepreneurship studies, including various subthemes. These are articulated and complementary to each other, and this is the perspective of the Program. Thus, the relevance of the area is an important factor of professional qualification to work in the academic life. The Program is classified as level 4 by Capes.

Level

Academic Degree – Master's and Doctorate

Research areas

Organizations, Strategies and work;
Entrepreneurship, innovation and market

ADDRESS:

State University of Maringá
Center of Social Applied - CSA
Block C-23
5.790, Colombo Ave. - Jd. Universitário
Maringá - PR
ZIPCODE: 87020-900

PHONE #:

++ 55 (44) 3011-4941

sec-ppa@uem.br

www.ppa.uem.br

Graduate Program in Accounting Sciences

Area:

Applied Social Sciences



The Graduate Program in Accounting Sciences (PCO) contemplates a body of knowledge which is founded on theoretical and practical basis taking into account operational, economical, financial and patrimonial considerations, related to the organizational management process. The proposal is to contribute to the development of competences, from an analytical approach and on the capability of implementing projects in terms of the research lines. Thus conceptual theoretical support studies are made, besides empirical investigations involving the measurement and disclosure of information that can support the decision-making process to the users of accounting information. The Program is classified as level 3 by Capes.

Level

Academic Degree – Master's

Research areas

Management Accounting
Accounting for External Users

ADDRESS:

State University of Maringá
Center of Social Applied - CSA
Block C-23
5.790, Colombo Ave. - Jd. Universitário
Maringá - PR
ZIPCODE: 87020-900

PHONE #:

++ 55 (44) 3011-6025

sec-pco@uem.br

www.pco.uem.br

Graduate Program in Economics Sciences

Area:

Applied Social Sciences



The Graduate Program in Economics Sciences (PCE) aims to qualify teachers and doctors in two research areas. Its main goal is to empower scientific knowledge to formulate economic and social policies that improve the well-being of a country. This power of knowledge is done through the teaching of advanced forms of basic disciplines as Macroeconomics, Microeconomics, Mathematics, Econometrics and offering a list of specialized disciplines, with emphasis on the Brazilian Economy, Regional Economy, Economic Growth, International Economics, Monetary Economics, Applied Econometrics, among others. The Program is classified as level 4 by Capes.

Level

Academic Degree – Master's and Doctorate

Research Areas

Applied Economics and Economic Development

ADDRESS:

State University of Maringá
Center of Social Applied - CSA
Block C-34
5.790, Colombo Ave. - Jd. Universitário
Maringá - PR
ZIPCODE: 87020-900

PHONE #:

++ 55 (44) 3011-4987

sec-pce@uem.br

www.pce.uem.br

Graduate Program in Literature

Area:

**Linguistics,
Literature
and Arts**

Level

Academic Degree – Master's and
Doctorate

Research Areas

Linguistic studies: Linguistic description; Teaching and learning languages; Studies of text and Discourse; Literary Studies: Literary field and training of readers; Literature and history; Literature and identity construction

ADDRESS:

State University of Maringá
Center of Human Sciences, Literature
and Arts - CCH
Block G-34
5.790, Colombo Ave. - Jd. Universitário
Maringá - PR
ZIPCODE: 87020-900

PHONE #:

++ 55 (44) 3011-4830



The Graduate Program in Literature (PLE) consists of systematically arranged studies and research activities. Its purposes are the training and enhancement of high-level professionals to work in the fields of teaching and research in a convivial space integrated of linguistic and literary studies, as part of their teaching, description and use in contexts of production, reception and circulation. Its overall objective is to train qualified researchers in order to promote the production of knowledge in their areas of concentration. The Program is classified as level 5 by Capes.

sec-ple@uem.br

www.ple.uem.br

Graduate Program in Bioenergy

Area:

Engineering



The Graduate Program in Bioenergy (PPB) aims to contribute in training qualified human resources to transfer to society specific knowledge in production, quality control, utilization, supply chain management, proper use and evaluation of the impacts of biofuels and their co-products on the environment and society. Thus, the overall goal of the course is to train qualified personnel in Bioenergy, with emphasis on biofuels, to work in research, development and university teaching from the multidisciplinary and interdisciplinary perspective, aiming to develop the state, nationally and internationally within the Mercosur. The Program is classified as level 3 by Capes.

Level

Academic Degree – Master's

Research Areas

Environmental and socioeconomic impacts; Generation and characterization of raw materials, production of biofuels and co-products; use and quality control of biofuels

ADDRESS:

State University of Maringá
Center of Technology - CTC
Block C-67
5.790, Colombo Ave. - Jd. Universitário
Maringá - PR
ZIPCODE 87020-900

PHONE #:

++ 55 (44) 3011-5088

ppb@deq.uem.br

www.deq.uem.br

Graduate Program in Physical Education

Area:

Health Sciences

Level

Academic Degree – Master's and Doctorate

Research Areas

Adjustments and physiological and metabolic responses to physical exercises;
Physical activity related to health;
Psychosocial and motor factors related to human performance; Knowledge practices, politics and production in physical education; Work and formation in physical education

ADDRESS:

State University of Maringá
Center of Health Sciences - CCS
Block M-06
5.790, Colombo Ave. - Jd. Universitário
Maringá - PR
ZIPCODE: 87020-900

State University of Londrina – Physical
Center of Education and Sports
PO Box 6001 - Rod. Celso Garcia Cid,
445 - Km 380 - Londrina - PR
ZIPCODE : 86051-990

PHONE PHONE #:

UEM ++ 55 (44) 3011-4470 -
UEL ++ 55 (43) 3371-5953



The Graduate Program in Physical Education – UEM/UEL (PEF), linked to the Physical Education and Sports Center of Londrina State University, as well as to the Physical Education Department of Maringá State University, is the first Graduate Program in association between two universities approved by Capes. The Program is classified as level 4 by Capes. The master's and doctorate degree have been structured to meet the needs of Health Sciences professionals, especially those bachelors in Physical Education/Sports, who are interested in studying human performance and physical activity, as well as social practices in physical education, according to the research areas offered by the program.

sec-pef@uem.br / cefepos@uel.br

www.uel.br/pos/ppgef

Graduate Program in Architecture and Urbanism

Area:

Applied Social Sciences

Level

Academic Degree – Master's

Research Areas

Historiography and methodology of data organization for the project; Production of the built environment

ADDRESS:

State University of Maringá
Center of Technology - CTC
Block 32
5.790, Colombo Ave. - Jd. Universitário
Maringá - PR
ZIPCODE: 87020-900

State University of Londrina
Rodovia Celso Garcia Cid - Pr-445 -
km 380 - Londrina - PR
ZIPCODE: 86051-990

PHONE #:

++ 55 (44) 3011-5817
UEL - ++ 55 (43) 3371-4727



The Graduate Program in Architectural and Urbanism (PPU) is the first one in the area in the state of Paraná approved by Capes and resulting from a joint proposal from State University of Maringá and State University of Londrina. The Program is classified as level 3 by Capes. The course is based on scientific research, and it integrates the two institutions, contributing to the systematization of the process of design and development of projective ideas, to assess the impacts of the implementation of these ideas and performance of buildings, to measure human behavior in these spaces and to understand the social, cultural, political and economic production of the built environment.

sec-ppu@uem.br

www.ppu.uem.br

Graduate Program in Agroecology

Area:

Agricultural Sciences

Level

Professional Master's Degree

Research areas

Agroecological management of soils
Agroecological management of pests and diseases
Agroecological Production Systems

ADDRESS:

State University of Maringá
Center of Agricultural Sciences - CCA
Block 115 – NADS Secretary
5.790, Colombo Ave. - Jd. Universitário
Maringá - PR
ZIPCODE: 87020-900

PHONE #:

++ 55 (44) 3011-5847



The Graduate Program in Agroecology (MPA) focuses on form and qualify professionals to attend the increasing demand on farming and cattle raising in ecological basis. Demands as technical assistance, generation and validation of technologies, teaching and qualifying actors involved in the mentioned model. Also attends specific demands of research in the context of family agroecological farming, stimulating the production and dissemination of agroecological scientific knowledge and its relation with other scientific areas, preparing the students to professional performance. It uses participatory research methods with systemic approach and the construction of knowledge from the actors involved in this process: technicians, students, family farmers.

sec-mpa@uem.br

www.mpa.uem.br

Graduate Program in Public Policies

Area:

Human Sciences



The proposal for creating the Graduate Program in Public Policies (PPP) was a request of the University Rectory as a demand from the Paraná Government by means of a School of Government. It concerns teaching to public policies development, towards the public sector and spheres of government which are responsible for their elaboration and monitoring. Besides, the option for professional master's degree meets the specifications of the public administration that we aim to qualify.

Level

Professional Master's Degree

Research areas

Institutional dynamics and social configurations

ADDRESS:

State University of Maringá
Center of Human Sciences, Literature
and Arts - CCH
Block H-12
5.790, Colombo Ave. - Jd. Universitário
Maringá - PR
ZIPCODE: 87020-900

PHONE #:

++ 55 (44) 3011-8905

sec-ppp@uem.br

www.ppp.uem.br

National Professional Master's Degree in Physics Education

Area:

**Exact Sciences
and Earth
Sciences**



The National Professional Master's Degree in Physics Education (MNPEF) is a national program directed to high school and elementary school teachers, and whose main emphasis is on aspects of the content related to the area. It is an initiative of the Brazilian Physicists Society and aims at providing basic education teachers with current techniques of media and electronic resources application, besides experiences and displays of different physical phenomena.

Level

Professional Master's Degree

Research Areas

Physics in elementary school; Physics in High school; Teaching and learning processes and communication/information technologies in Physics education

ADDRESS:

State University of Maringá
Center of Exact Sciences - CCE
Block G-56
5.790, Colombo Ave. - Jd. Universitário
Maringá - PR
ZIPCODE: 87020-900

PHONE #:

++ 55 (44) 3011-5910

mnpef_uem@dfi.uem.br

www.dfi.uem.br/dfimestrado/

Professional Master's Degree in Mathematics in Nationwide Network

Area:

**Exact Sciences
and Earth
Sciences**



The Professional Master's Degree in Mathematics in Nationwide Network (Profmat) requires both physical attendance and on-line commitment. It is recommended by the Technical and Scientific Council of Higher Education of Capes. It assists Mathematics teachers who are currently working in basic education, especially at public schools, and who seek for developing their professional formation, emphasizing the mastering of mathematical contents that are relevant to their performance. The teachers receive scholarships from CAPES, as long as they work at public schools for five years after having finished the course. The admission of teachers happens through a national exam.

Level

Professional Master's degree

Research Areas

Algebra; Analysis; Mathematics basic education; Geometry and topology; Applied Mathematics

ADDRESS:

State University of Maringá
Center of Exact Sciences - CCE
Block F-67
5.790, Colombo Ave. - Jd. Universitário
Maringá - PR
ZIPCODE: 87020-900

PHONE #:

++ 55 (44) 3011-4504

sec-profmat@uem.br

www.profmat.uem.br

Professional Master in Literature

Área:

**Linguistics,
Literature
and Arts**

Levelw

Professional Master's Degree

Research Areas

Theories of language and education;
Reading and text production: Social
diversity and teaching practices

ADDRESS:

State University of Maringá
Center of Human Sciences, Literature
and Arts - CCH
Block G-34
5.790, Colombo Ave. - Jd. Universitário
Maringá - PR
ZIPCODE: 87020-900

PHONE #:

++ 55 (44) 3011-6032



The Professional Master's Program in Literature (Profletras), offered in Nationwide Network, is a graduate program that includes the participation of public institutions of higher education within the Sistema Universidade Aberta do Brasil (UAB) and is coordinated by Universidade Federal do Rio Grande do Norte (UFRN). The program aims, in the medium term, the training of elementary school teachers in the teaching of the Portuguese language throughout the Brazilian territory. The target public of Profletras consists of teachers of all generations coming from undergraduate courses in Languages and who teach English in elementary school.

profletrasuem@gmail.com

www.profletras.uem.br



State University of Maringá

5.790, Colombo Ave. • Jd. Universitário • Maringá - PR
ZIPCODE 87020-900 • Phone #: ++ 55 (44) 3011-4040
www.uem.br

